

# Contents Icon Master



# Blind Mellon Software

[Commands](#)

[License](#)

[Other Products](#)

[Registration benefits](#)

[Support Sites](#)

[Register Icon Master](#)

Blind Mellon Software all rights reserved.

# Commands Icon Master

[Viewer](#)

[Editor](#)

[Color](#)

[Editor Tools](#)

[Contents](#)

[Register](#)

Blind Mellon Software all rights reserved.

# Support Sites

We provide several locations for down loading the latest version of all of our software.

Internet World Wide Web:

<http://www.blindmellon.com/~blindmello>

Our Bulletin Board System.

1 702 233 9071, when you call you will first have to download the Excalibur(tm) terminal and then call back. [About Blind Mellon Circus](#)

Blind Mellon Software all rights reserved.

# License



Icon Master

Copyright (C) 1994, 95,96 Mike Owens, Blind Mellon Software.  
All Rights Reserved

Ordering Information may be found in this help file.

## License Agreement

The use of Icon Master is subject to the following terms and conditions.

### Title To The Licensed Software

Title to the licensed software is NOT transferred or sold to the end user. The end user is granted a nonexclusive license to use the software on a SINGLE computer or computer work station.

### Copyright Protection

Icon Master is copyrighted material. It is protected by the copyright laws of the United States.,

You may make copies of Icon Master and distribute to your friends.

You may use Icon Master on a thirty (30) day trial basis.

### Limited Warranty

Mike Owens does not warrant that the licensed software will meet your requirements or that the operation of the software will be uninterrupted or error free. Mike Owens warrants that every effort to resolve problems of functionality or operation will be made to satisfy the registered customer. Problems resolved in the software will be resolved in the latest version that may be down loaded and registered by the user.

ANY IMPLIED WARRANTIES INCLUDING ANY WARRANTIES OF MERCHANTABILITY OR FITNESS FOR A PARTICULAR PURPOSE ARE LIMITED TO THE TERM OF THE EXPRESS WARRANTIES. Some States do not allow limitations on how long an implied warranty lasts, so the above limitation

may not apply to you.

#### Other Warranties

-----

The warranties set forth above are in lieu of any and all other express or implied warranties, whether oral, written, or implied, and the remedies set forth above are the sole and exclusive remedies.

#### Limitation Of Liability

Mike Owens is not responsible nor liable in anyway for any problems or damage caused by the licensed software that may result from using the licensed software. This includes, but is not limited to, computer hardware, computer software, operating systems, and any computer or computing accessories. End user agrees to hold Mike Owens harmless for any problems arising from the use of this software.

**Limited License To Copy The Software** You are granted a limited license to copy and distribute Icon Master No fee, charge or other compensation may be accepted or requested by anyone without the express written permission of Mike Owens.

**Public Domain Disk Vendors May NOT CHARGE** a fee for Icon Master. However you may include Icon Master on a diskette/CD-ROM for which you charge a nominal distribution fee. The purchaser of said diskette must be informed in advance that the fee paid to acquire the diskette does NOT relieve said purchaser from paying the Registration Fee for file wiz if said purchaser uses Icon Master.

**Operators of electronic bulletin board systems (Sysops) may post Icon Master for down loading by their users without written permission A fee may be charged for access to the BBS AS LONG AS NO SPECIFIC FEE IS CHARGED FOR DOWN LOADING Icon Master.**

#### Evaluation and Registration

This is not free software. This license allows you to use this software for evaluation purposes without charge for a period of 30 days. If you use this software after the 30 day evaluation period a registration fee is required.

#### Contents

Blind Mellon Software all rights reserved.

# Register

[Register with A Credit Card](#)

[Register by mail](#)

[Register on our web site](#)

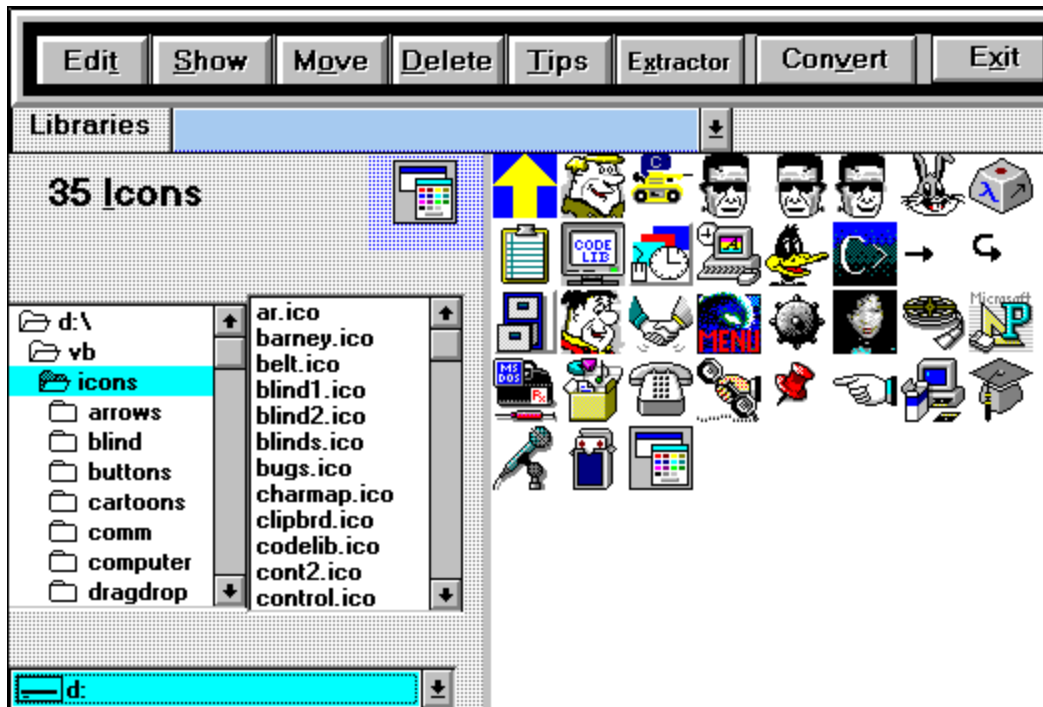
[Call our bbs](#)

[Detail info on registering on compuserve](#)

[Contents](#)

Blind Mellon Software all rights reserved.

# Icon Viewer



## Libs

You may declare directories as libraries, You will be ask for the directory name and a name for the library, i.e. library name. You will then be able to quickly access you libraries via the list box below the exit button.

## Show

Show will display all the Icons in the current directory. Select the Icons with your mouse for further action.

## Options- Show all icons

Will display all icons in the directory when the directory is changed, depending on how many icons you have in each directory you may not want to choose this option.

## Options - Editor

Will call the editor.

### **Options - Favorite directory**

Choose this option to define the initial directory used when Icon Master Starts.

### **Options - Enter new library**

Will allow you to declare a directory a library and give it a name, you may then switch to that library via the list box below the exit button.

### **Options - Clear Library List**

Will reset the listbox library list to zero.

### **Manage - Copy or Move**

Will allow you select Icons in the current directory and either move them or copy them to the destination directory, If you have not declared a destination directory the program will ask you for one. You select icons to be copied/moved with your mouse, if you make a mistake you can remove the items from the list.

### **Destination Directory**

used as the destination for the copy/move operation.

### **Icon Extractor**

When you register Icon Master, you will receive a free Icon Extractor program that can be called from the options menu.

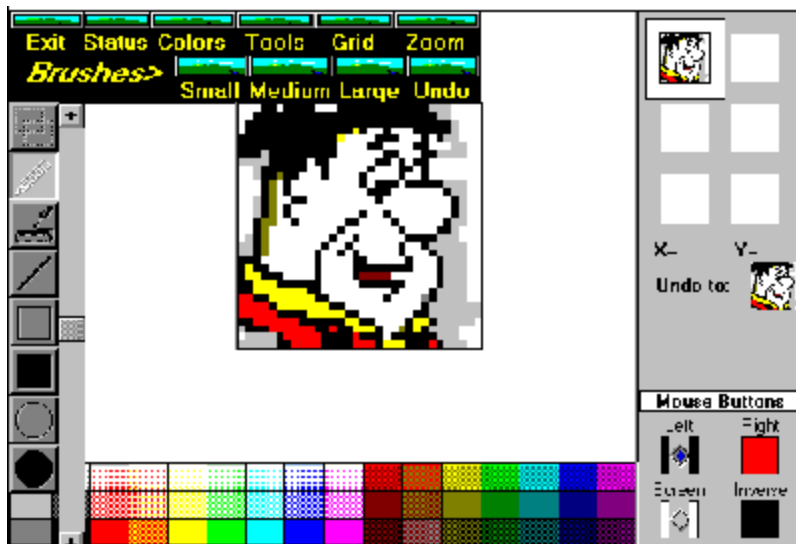
### **Task Bar**



Task Bar is a handy utility provided as a bonus to registered users of Wallpaper Manager. It must be started from Wallpaper Manager but once started maintains its own user run list and features. Task Bar will allow you to see and control everything that is running on windows simply by dropping the mouse all the way to the bottom of the screen at any point and time. You may also create your own run list menu.

Blind Mellon Software all rights reserved.

# Icon Editor



## New

This command clears the editing area to start a new icon. The new icon appears in the icon box selected the Status Area.

If there are any unsaved changes in the editing area when you select the New command, IconMaster asks if you want to save the changes. IconMaster then clears the editing area to the currently selected screen color and changes the Title bar to [Untitled].

## Save

This command saves changes made to the icon in the editing area. If the Title bar shows that the icon is untitled, the Save icon dialog box appears so you can give the icon file a name.

## Save As

This command saves the icon in the editing area. The Save icon dialog box appears so you can save the icon with a different file name.

## Exit

This command closes the Icon Editor. If any of the six icons in the Status Area have unsaved changes, IconMaster prompts you to exit any way or cancel the Exit command.

## **Undo**

This command removes any changes from the icon since the time you changed editing tools or selected another icon. Once you select a new tool or another icon from the Status Area, the Undo command cannot remove the changes made in the editing area. The Undo icon button in the Status Area displays the condition the icon will return to if you select the Undo command.

## **Cut**

This command copies the portion of the editing area you select to the Clipboard and clears the selected area to the current screen color. The Cut command does not work if you move the part of the icon you select before cutting it. You must reselect the area you want to cut then use the Cut command.

## **Copy**

This command copies the portion of the editing area you select to the Clipboard. The editing area is not affected. The Copy command does not work if you move the part of the icon you select before copying it. You must reselect the area you want to cut then use the Copy command.

## **Paste**

This command inserts the contents of the Clipboard as a selected group of pixels in the upper-left corner of the editing area. You can then move the selected pixels anywhere in the editing area before pasting them in the current icon. To paste the selection into the icon, click the mouse anywhere in the editing area outside of the selection.

All pixels in the pasted bit map that match the current screen color appear transparent and do not affect the icon below. Pixels that match the inverse of the screen color replace the pixels in the icon.

## **Paste Opaque**

This command inserts the contents of the Clipboard as a selected group of

pixels in the upper-left corner of the editing area. You can then move the selected pixels anywhere in the editing area before pasting them in the current icon. To paste the selection into the icon, click the mouse anywhere in the editing area outside of the selection.

All pixels in the bit map cover any pixels in the icon below.

### **Delete**

This command deletes the selection in the editing area from the icon, replacing the selection with the current screen color.

### **Select All**

This command selects the entire icon in the editing area. You can also double-click the Select tool to select the entire icon.

### **Flip Horizontal**

This command flips the current selection in the editing area from left to right.

### **Flip Vertical**

This command flips the current selection in the editing area from top to bottom.

### **Rotate Right 90 degrees**

This command rotates the current selection in the editing area 90 degrees to the left.

### **Rotate Left 90 degrees**

This command rotates the current selection in the editing area 90 degrees to the right.

## **Invert**

This command changes all the colors in the current selection to their opposites. The following picture shows the normal color palette in ironmaster and the inverted color palette so you can see how the colors change when using the Invert command.

## **.ZOOM - editor**

will make the zoom viewer visible, so that you may increase the icon image size on your desk top.

Blind Mellon Software all rights reserved.

# Editor Tools

## How to Select a Tool

The top part of the Status Area contains six icon boxes. The icon boxes serve the following uses:

Displays icons open for editing. you can edit up to six icons at one time. Indicates the currently selected icon with a square border. Displays the actual size of the icons being edited. Switches between any open icons by clicking on the icon box of the icon you want to edit. Lets you test how icons appear when dragged.

## Select Tool

This tool selects a rectangular region in the editing area.

To use the Select tool click in the editing area to anchor one corner of the area you want to select. Drag the mouse until the flexible box that appears surrounds the area you want to select. Release the mouse button. If you make a mistake while selecting click outside of the current selection and start over.

## Paint Tool

This tool paints pixels in the editing area according to the selected brush size.

To use the Paint tool click the mouse in the editing area and drag to begin painting.

## Fill Tool

This tool fills a closed area with the color selected in the Color Palette.

To use the Fill tool click in the area to be filled. The area will be filled with the color selected in the Color Palette. The Fill tool fills adjacent pixels which are the same color as the starting pixel. If you fill an area with a dithered color rather than solid color the result will be a checkerboard pattern.

## Line Tool

This tool draws straight lines. To use the Line tool click in the editing area to anchor one end of the line. Drag the mouse until the mouse reaches the other end of the line you want to draw. Release the mouse button to draw the line in the icon. The width of the line corresponds to the current brush size. The color of the line is the color selected in the Color Palette. To draw a horizontal vertical or diagonal line hold down the SHIFT key as you drag the mouse.

## **Square Tool**

This tool draws rectangles and squares. To use the Square tool click in the editing area to anchor one corner of the square. Drag the mouse until the square is the size and shape you want. When the square or rectangle is the right size and shape release the mouse button. The brush size determines width of the box's border. The color of the outline of the square is determined by the Color Palette.

To draw a perfect square hold down the SHIFT key as you drag the mouse.

## **Filled Square Tool**

This tool draws filled rectangles and squares. To use the Filled Square tool click in the editing area to anchor one corner of the square. Drag the mouse until the square is the size and shape you want. When the square or rectangle is the right size and shape release the mouse button. The brush size determines width of the box's border. The color that fills in the square is determined by the Color Palette. The border of the square is a line and therefore cannot be drawn using dithered colors. If you select a dithered color the border of the square will appear in the nearest solid color. If you want the entire square to be drawn with a dithered color first draw the square with a solid color then use the Fill tool to fill it in with the desired dithered color.

## **Circle Tool**

This tool draws circles and ellipses. To use the Circle tool click in the editing area to anchor one corner of a flexible box containing an ellipse. The box appears while you draw to show the anchor point and current mouse position. It disappears when you finish drawing. Drag the mouse until the ellipse is the size and shape you want. When the circle or ellipse is the right size and shape release the mouse button.

The brush size determines the border width of the circle or ellipse border. The color of the circle or ellipse border is determined by the Color Palette.

### **To draw a perfect circle**

hold down the SHIFT key as you drag the mouse.

### **Filled Circle Tool**

This tool draws filled circles and ellipses. To use the Filled Circle tool click in the editing area to anchor one corner of a flexible box containing an ellipse. The box appears while you draw to show the anchor point and current mouse position. It disappears when you finish drawing. Drag the mouse until the ellipse is the size and shape you want.

When the circle or ellipse is the right size and shape release the mouse button. The brush size determines the border width of the circle or ellipse border. The color that fills the circle or ellipse is determined by the Color Palette. To draw a perfect circle hold down the SHIFT key as you drag the mouse. The border of the ellipse is a line and therefore cannot be drawn using dithered colors. If you select a dithered color the border of the ellipse will appear in the nearest solid color. If you want the entire ellipse to be drawn with a dithered color first draw the ellipse with a solid color then use the Fill tool to fill it in with the desired dithered color.

### **Flip Horizontal**

This command flips the current selection in the editing area from left to right.

### **Flip Vertical**

This command flips the current selection in the editing area from top to bottom.

### **Rotate Right 90 degrees**

This command rotates the current selection in the editing area 90 degrees to the left.

### **Rotate Left 90 degrees**



This command rotates the current selection in the editing area 90 degrees to the right.

## **Invert**

This command changes all the colors in the current selection to their opposites. The following picture shows the normal color palette in Icon Master and the inverted color palette so you can see how the colors change when using the Invert command.

## **Editor: Moving a Selection**

Once a region in the icon has been selected with the Select tool there are two ways to move it:

**Opaque Move** Use the right mouse button to click and drag the selected pixels. The selection is moved as is including all foreground colored pixels and all screen and inverse screen colored pixels.

### **Transparent Move**

Use the left mouse button to click and drag the selected pixels. Only the foreground colored pixels move. This lets you move regions in the icon that appear to be a non-rectangular. Once you move a selection of pixels selection rectangle changes from a dotted rectangle to a solid rectangle.

Holding down the SHIFT key while moving a selection leaves a copy of the selected pixels at their original location. Selecting another tool or selecting another icon also deposits the moved pixels to their current location.

## **Editor: Zooming In and Out**

The vertical scroll bar along the left side of the editing area increases or decreases the magnification of the currently selected icon.

You can use this scroll bar to display the icon at actual size or magnify it to fill the editing area. When you resize the Editor the scroll bars adjust to the new window size so that the icon stays at the same magnification.



# Color

## Editor: Color Palette

The Color Palette contains solid and dithered colors you can use when editing an icon.

To select a color from the palette click a color cell with the left or right mouse button. IconMaster assigns the selected color to the mouse button used to click the color cell. You use this procedure to assign foreground colors as well as screen and inverse colors.

## Double-clicking a mouse button assigns the selected color

to that button then opens the Custom Color Palette Window. You can define your own colors in this window.

## Editor: Defining Colors

You define colors using the Custom Color Palette shown below. To open the Custom Color Palette double-clicking the Color Palette in the Editor or select the Colors command from the Color menu. Minimizing or closing the Editor window also hides or closes the Custom Color Palette window.

## Color Elements and Values

Custom colors are composed of red (R) green (G) and blue (B) elements. These elements have values ranging from 0 to 255. A value of 0 means none of that color appears in the custom color.

## Setting Color Values

Use the RGB scroll bars to set the individual color elements. You can also enter color values into the fields to the right of each scroll bar. The color cell to the right of each field displays the color matching the value chosen for each element (red green or blue).

The Selected Color cell displays the RGB color created by combining the individual RGB elements. Since some of the tools cannot use dithered colors the Nearest Solid Color is also displayed.

Blind Mellon Software all rights reserved.



